

© Copyright
This drawing and any design hereon is the copyright of the
Consultants and must not be reproduced without their written
consent.

All drawings remain the property of the Consultants.

LEGEND

PROPOSED SURFACE WATER DRAIN AND MANHOLE	
EXISTING SURFACE WATER DRAIN AND MANHOLE	
PROPOSED FOUL WATER DRAIN AND MANHOLE	
EXISTING FOUL WATER DRAIN AND MANHOLE	
PROPOSED FOUL RISING MAIN	
EXISTING FOUL RISING MAIN	
SURFACE WATER OUTFALL	
PROPOSED SPOT LEVELS	
SITE BOUNDARY	

NOTES:

UP TO INSPECTION CHAMBERS, THE FOUL SEWER SYSTEM HAS BEEN DESIGNED AND DETAILED IN ACCORDANCE WITH IRISH WATER'S CODE OF PRACTICE FOR WASTEWATER INFRASTRUCTURE (IW-CDS-5030-03) AND IRISH WATER'S WASTEWATER INFRASTRUCTURE STANDARD DETAILS (IW-CDS-5030-01).

THE FOUL SEWER SYSTEM IS TO BE CONSTRUCTED IN ACCORDANCE WITH IRISH WATER'S CODE OF PRACTICE FOR WASTEWATER INFRASTRUCTURE (IW-CDS-5030-03) AND IRISH WATER'S WASTEWATER INFRASTRUCTURE STANDARD DETAILS (IW-CDS-5030-01).

CONSTRUCTION OF THE FOUL SEWER SYSTEM SHALL ENSURE REQUIRED SEPARATION DISTANCES AS SPECIFIED IN SECTION 3.5 OF IW-CDS-5030-03.

FOUL SEWERS TO BE THERMOPLASTIC STRUCTURED WALL PIPES IN ACCORDANCE WITH SECTION 3.13 OF IW-CDS-5030-03.

FOUL SERVICE CONNECTIONS TO BE UPVC PIPES IN ACCORDANCE WITH SECTION 3.13 OF IW-CDS-5030-03.

MANHOLES TO BE PRECAST CONCRETE AND IN ACCORDANCE WITH SECTION 3.12 OF IW-CDS-5030-03 AND STD-WW-10 OF IW-CDS-5030-01, WITH BACKDROP MANHOLES TO BE AS PER STD-WW-12.

PRIVATE-SIDE INSPECTION CHAMBERS SHALL BE AS PER STD-WW-13.

WHERE LOCATED IN UNPAVED AREAS, MANHOLE COVERS TO BE SURROUNDED WITH A CONCRETE PLINTH AS PER NOTE 9 OF STD-WW-10 AND FORMED WITH C20/25 CONCRETE, 20MM AGGREGATE SIZE, BEDDED IN CLAUSE 804 MATERIAL.

POS	S4	For Planning	JL	PME	15.04.19
P04	S4	For Planning	JL	PME	29.03.19
P03	S4	For Irish Water Review	JL	PME	08.03.19
P02	S4	For Irish Water Review	JL	PME	06.03.19
P01	S4	For Irish Water Review	JL	PME	08.01.19
Rev.	Suit.	Description	Drawn	Chk'd	Date

Client
CAIRN HOMES PROPERTIES LTD.

Clients Representative:

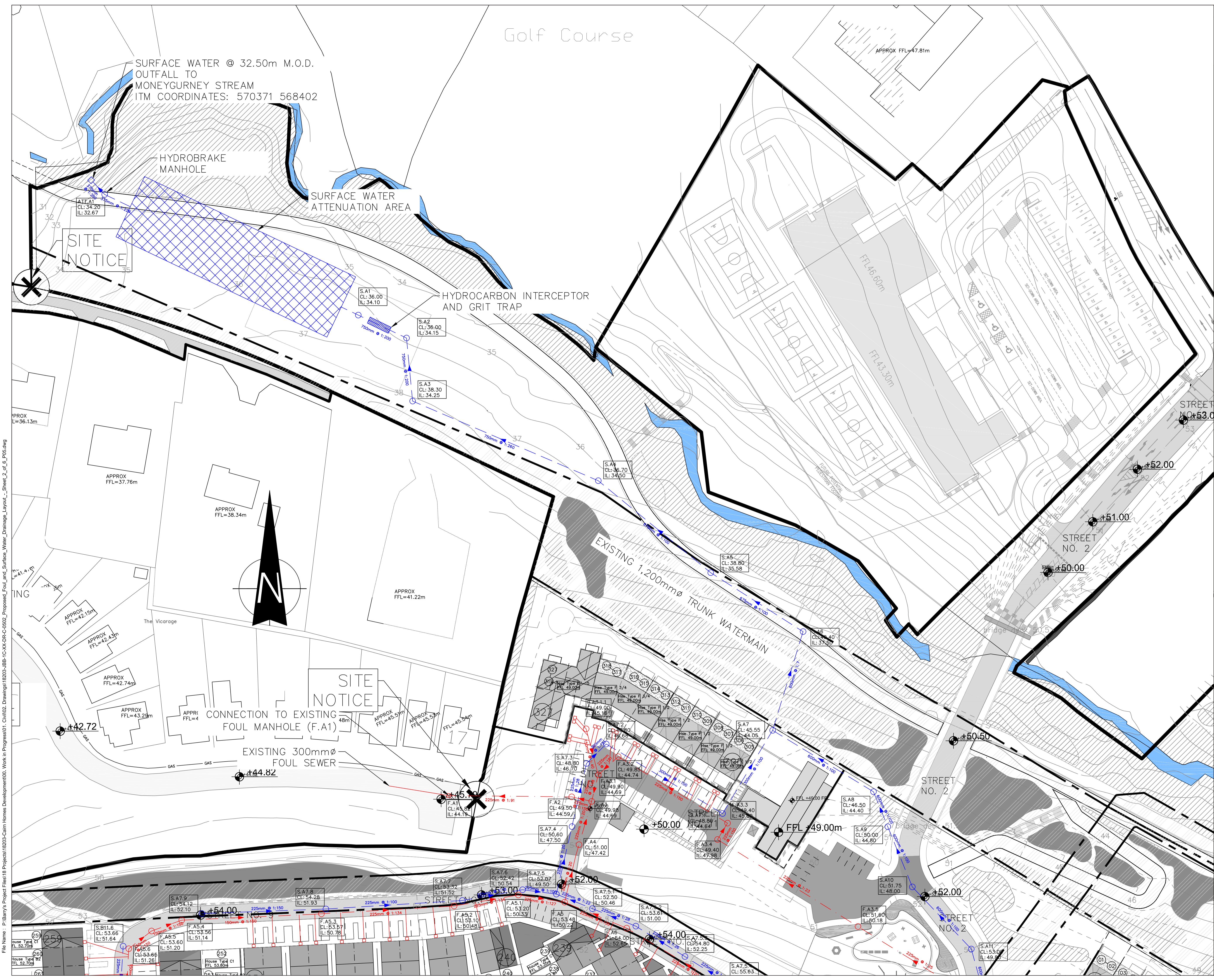
BARRY & PARTNERS
consulting engineers

3 Eastgate Road, Eastgate tel +353 21 475 7800
Business Park, Little Island, web www.jbbarry.ie
Co. Cork, Ireland email cork@jbbarry.ie

Project
STRATEGIC HOUSING DEVELOPMENT
CASTLETREASURE

Drawing Title
PROPOSED FOUL AND SURFACE WATER
DRAINAGE LAYOUT
(SHEET 2 OF 6)

Drawn by:	JL	Date:	08.01.19
Checked by:	PMcE	Date:	08.01.19
Approved by:	TF	Date:	08.01.19
Internal Project REF:	JBB-18203		
Scales:	1:500 @ A1		
Stage:	PLANNING		
Drawing No.:	18203-JBB-1C-XX-DR-C-0502	Revision	S4
	P05	Suitability Code	



File Name: P:\Barry's Project Files\18 Projects\18203-Cairn Homes Development\001 Work in Progress\01 Civil\02 Drawings\18203-JBB-1C-XX-DR-C-0502_Proposed_Foul_and_Surface_Water_Drainage_Layout_Sheet_2_of_6_P05.dwg